



The City of
Seguin

2009 Initial Assessment of City Council Districts Following 2009 Annexations

Presented By: Greg Hudson

Hudson & O'Leary, L.L.P.

1010 Mopac Circle, Suite 201

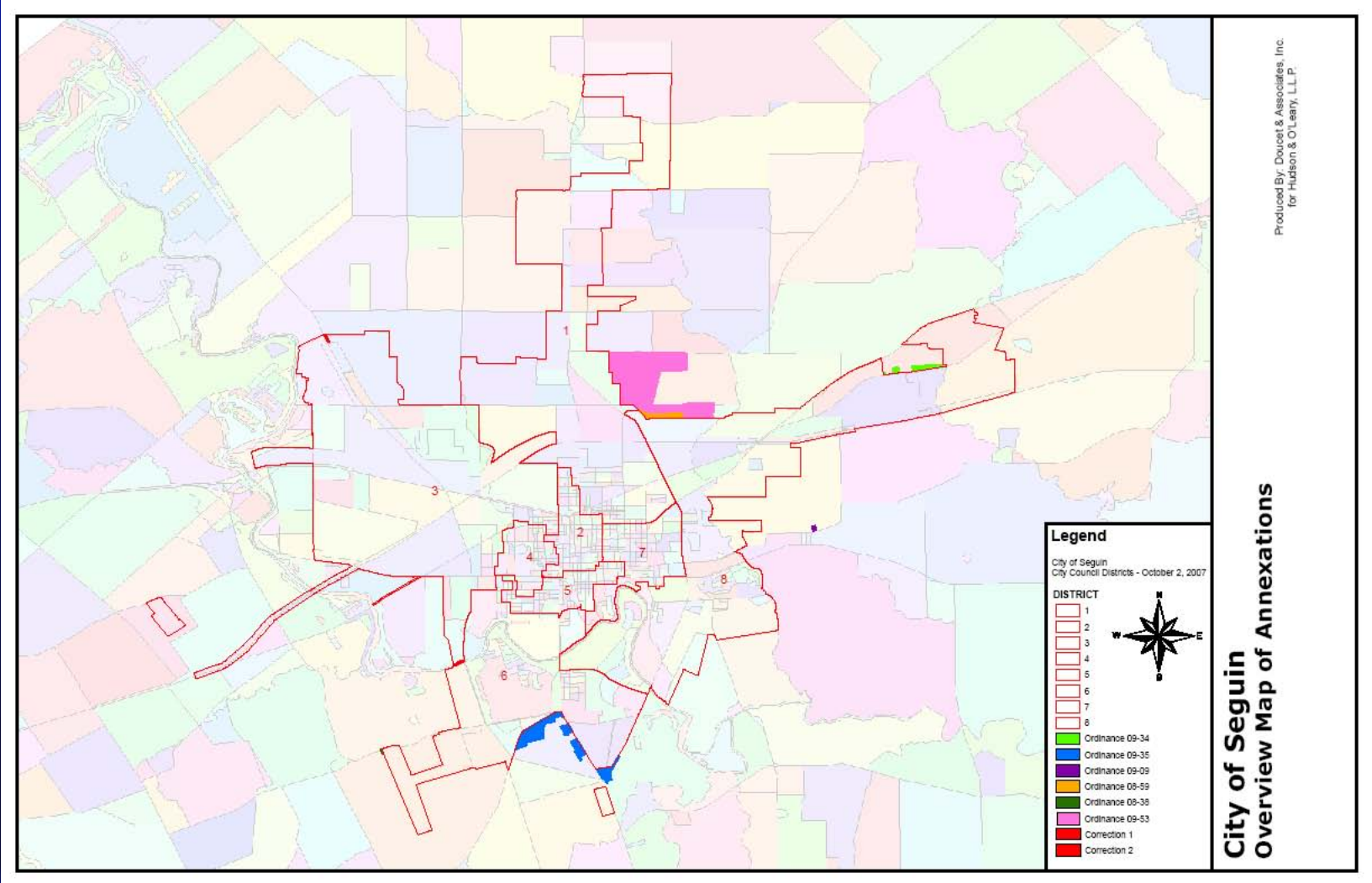
Austin, Texas 78746

512-441-9941

fax: 512-441-1501

ghudson@holaw.net

2007 Redistricting Plan – With 2009 Annexations



Produced By: Doucet & Associates, Inc.
for Hudson & O'Leary, L.L.P.

City of Seguin
Overview Map of Annexations

Population Table - 2007 Benchmark Plan – Total And Voting Age Populations

City of Seguin - Adopted Plan October 2, 2007 - 2000 Census Total and Voting Age Population							
District	Persons	Deviation	Hispanic % of Total Population	Non-Hispanic Anglo % of Total Population	Non-Hispanic Black % of Total Population	Non-Hispanic Asian % of Total Population	Non-Hispanic Other % of Total Population
1	2,951	-0.87%	67.74%	19.01%	12.10%	0.61%	0.61%
2	3,039	2.08%	68.44%	18.56%	11.52%	0.63%	0.86%
3	3,006	0.97%	60.25%	29.04%	9.48%	0.30%	0.93%
4	2,987	-0.34%	58.24%	29.85%	10.41%	1.35%	1.15%
5	2,905	-2.42%	66.51%	22.41%	10.26%	0.31%	1.51%
6	3,081	3.49%	41.64%	60.63%	6.07%	0.23%	1.46%
7	2,891	-2.89%	30.89%	61.95%	4.98%	1.18%	1.00%
8	2,979	0.07%	21.28%	72.31%	3.36%	1.51%	1.58%
Totals	23,819		51.77%	37.83%	8.52%	0.76%	1.14%
Ideal Size = 23,819/8 = 2,977 per district. Total Maximum Deviation = [3.49% - (-2.89)%] = 6.38%							
District	Total VAP*		Hispanic % of Total VAP	Non-Hispanic Anglo % of Total VAP	Non-Hispanic Black % of Total VAP	Non-Hispanic Asian % of Total VAP	Non-Hispanic Other % of Total VAP
1	1,980		63.54%	22.83%	12.32%	0.71%	0.68%
2	2,124		64.08%	21.52%	13.23%	0.52%	0.66%
3	2,025		56.54%	33.23%	8.89%	0.40%	0.99%
4	2,288		51.53%	35.05%	10.31%	1.75%	1.35%
5	1,939		59.82%	27.75%	10.93%	0.31%	1.19%
6	2,280		36.54%	68.62%	5.53%	0.31%	1.01%
7	2,231		27.43%	68.20%	4.30%	1.17%	0.90%
8	2,408		18.60%	75.29%	3.36%	1.29%	1.45%
Totals	17,275		46.29%	43.43%	8.43%	0.83%	1.04%
*Voting Age Population							
10/3/2007							

Total Deviation – 6.39%

Population Table - 2007 Benchmark Plan With 2009 Annexations

DISTRICT	TAPERSONS	Target	Dev.	Difference	TABLACK	TNHISPANIC	TAAMERIND	TAASIAN	TAHAWPAC	TA1OTHER	PCT HISP
1	2994	3,031	-1%	-37	367	2002	18	20	7	670	66.87%
2	3039	3,031	0%	8	359	2080	23	19	0	857	68.44%
3	3007	3,031	-1%	-24	298	1811	15	10	0	731	60.23%
4	2967	3,031	-2%	-64	316	1728	21	41	0	749	58.24%
5	2905	3,031	-4%	-126	307	1903	23	9	1	768	65.51%
6	3133	3,031	3%	102	201	1301	15	8	4	500	41.53%
7	2891	3,031	-5%	-140	144	893	9	40	1	262	30.89%
8	3314	3,031	9%	283	101	678	20	50	0	201	20.46%
Unassigned											

Largest Dev.
District 8
9.3%

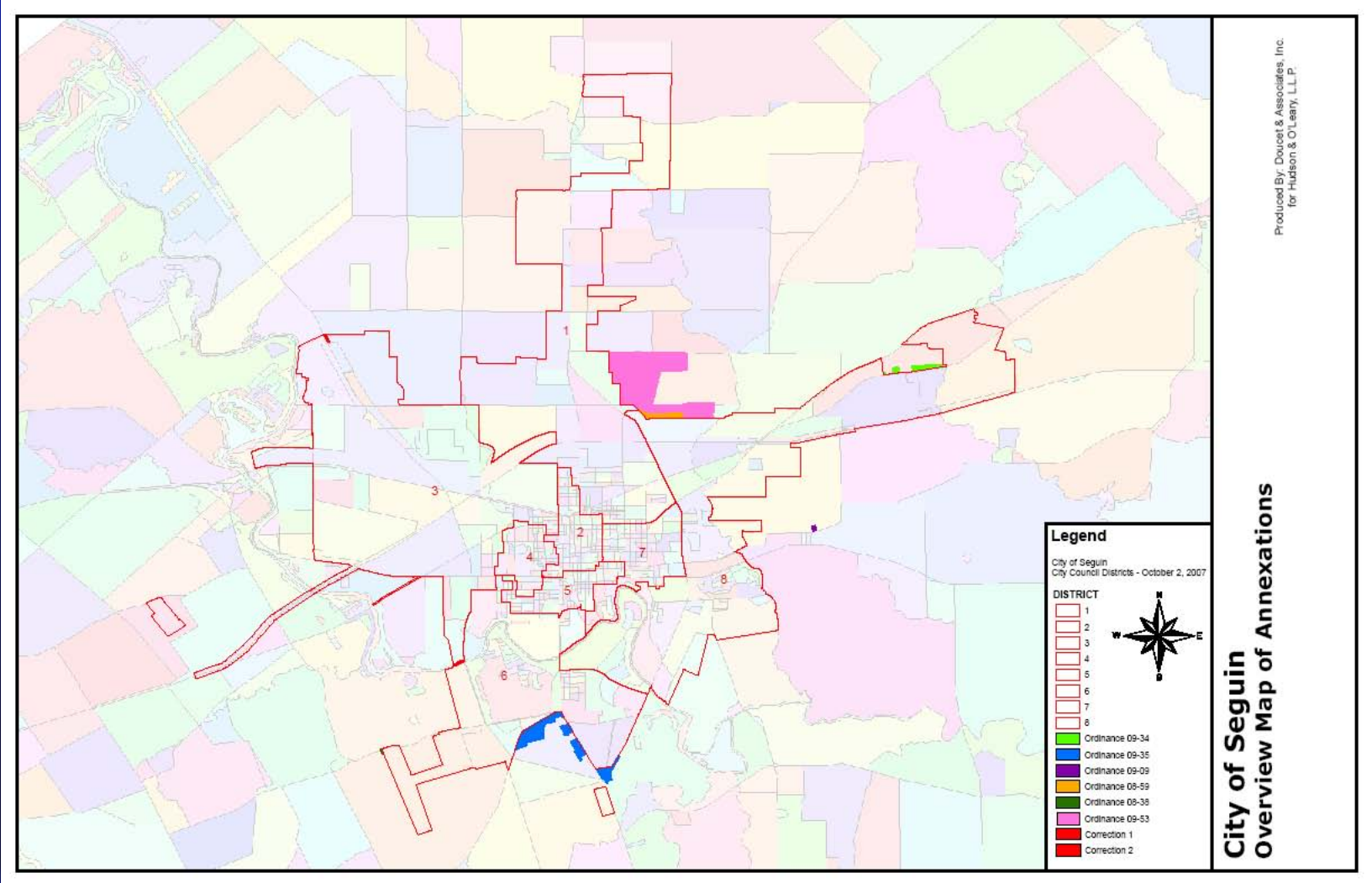
Plan Deviation:
8 and 7
14.%

Dynamic

Population Totals / Voting Age /

Total Deviation 14%

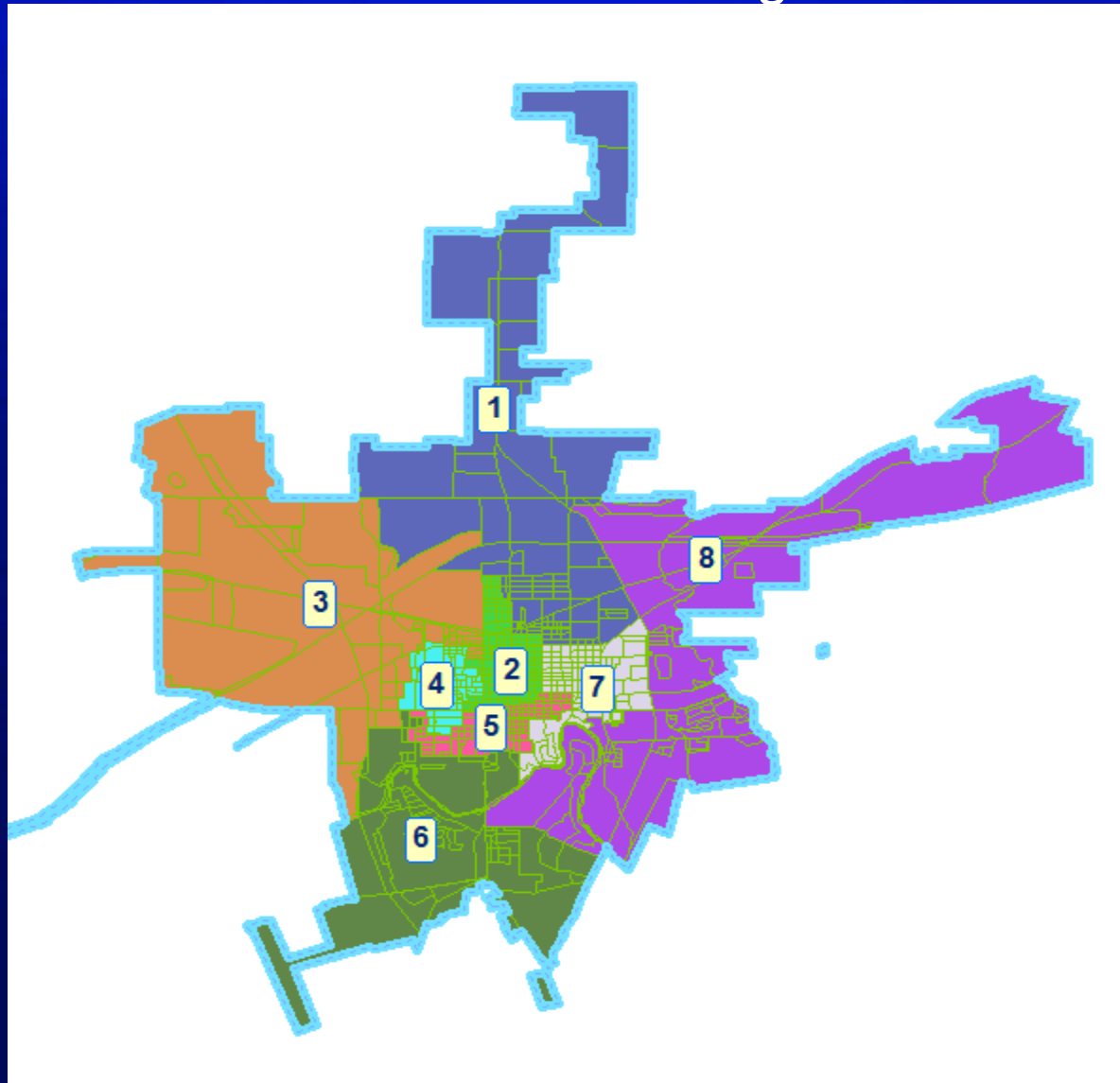
2007 Redistricting Plan – With 2009 Annexations



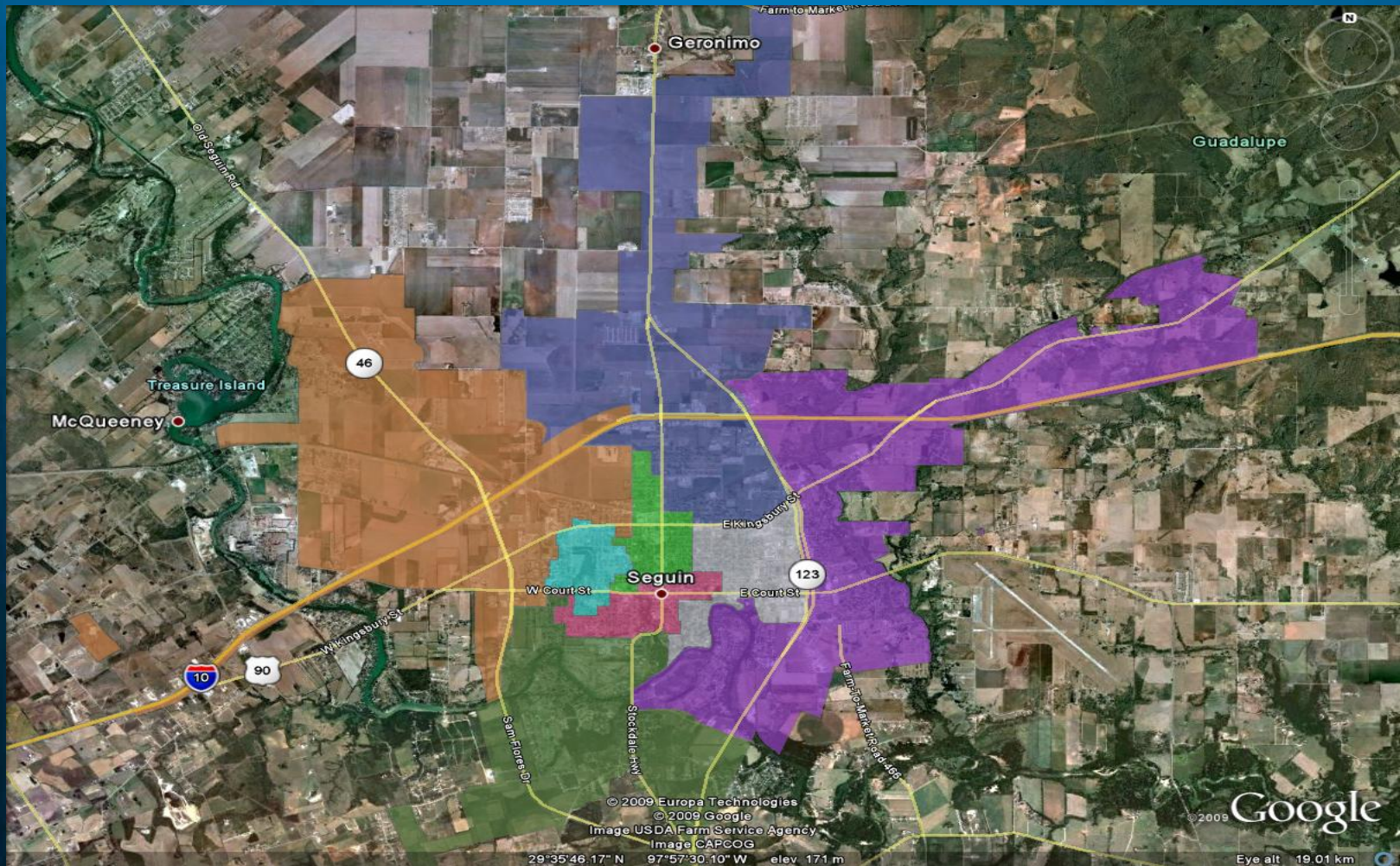
Produced By: Doucet & Associates, Inc.
for Hudson & O'Leary, L.L.P.

City of Seguin
Overview Map of Annexations

Council Member Boundaries Following 2009 Annexations



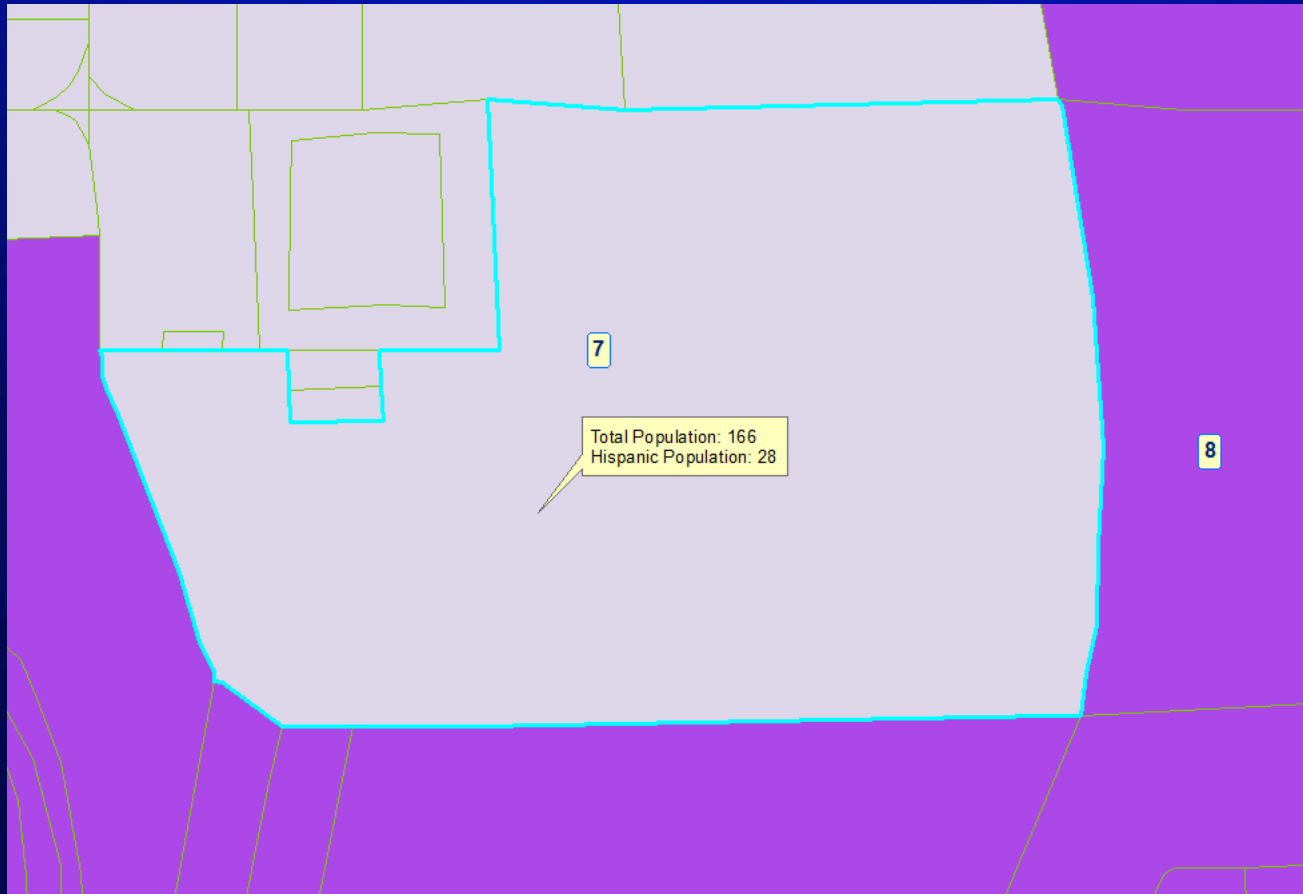
Example Redistricting Plan With Annexations



Census Block Reassigned From District 8 to District 7



Demographics of Reassigned Census Block



Example Redistricting Plan – Total Population Chart

DISTRICT	TAPERSONS	Target	Dev.	Difference	TABLACK	TNHISPANIC	TAAMERIND	TAASIAN	TAHAWPAC	TA1OTHER	PCT HISP
1	2994	3,031	-1%	-37	367	2002	18	20	7	670	66.87%
2	3039	3,031	0%	8	359	2080	23	19	0	857	68.44%
3	3007	3,031	-1%	-24	298	1811	15	10	0	731	60.23%
4	2967	3,031	-2%	-64	316	1728	21	41	0	749	58.24%
5	2905	3,031	-4%	-126	307	1903	23	9	1	768	65.51%
6	3133	3,031	3%	102	201	1301	15	8	4	500	41.53%
7	3057	3,031	1%	26	159	921	9	40	1	288	30.13%
8	3148	3,031	4%	117	86	650	20	50	0	175	20.65%
Unassigned											

Largest Dev.		
District 5	-4.2%	
Plan Deviation:		
8 and 5	8.2%	
<input type="checkbox"/> Dynamic		

Population Totals / Voting Age /

Total Deviation 8%

Example Redistricting Plan – Voting Age Population Chart

DISTRICT	VAPERSONS	VABLACK	VNHISPANIC	VAMERIND	VASIAN	VAHAWPAC	VA1OTHER	PCT HISP						
1	2013	250	1261	15	16	7	419	62.64%						
2	2124	288	1361	17	11	0	553	64.08%						
3	2026	188	1144	13	9	0	439	56.47%						
4	2288	238	1179	16	41	0	498	51.53%						
5	1939	216	1160	17	6	1	458	59.82%						
6	2320	136	845	12	8	4	312	36.42%						
7	2394	111	640	9	29	1	212	26.73%						
8	2492	68	454	13	34	0	124	18.22%						
Unassigned														

Name	Value	District
Largest Dev.		
District 5	-4.2%	
Plan Deviation:		
8 and 5	8.%	
<input type="checkbox"/> Dynamic		

◀ ▶ \ Population Totals / \ Voting Age /

Retains Hispanic Majorities in Districts 1 - 5

Redistricting Criteria

- Where possible, easily identifiable geographic boundaries should be followed.
- Communities of interest should be maintained in a single district, where possible, and attempts should be made to avoid splitting neighborhoods.
- To the extent possible, districts should be composed of whole voting precincts. Where this is not possible or practicable, districts should be drawn in a way that permits the creation of practical voting precincts and that ensures that adequate facilities for polling places exist in each voting precinct.

Redistricting Criteria

- Although it is recognized that existing districts will have to be altered to reflect new population distribution, any districting plan should, to the extent possible, be based on existing districts.
- Districts must be configured so that they are relatively equal in total population according to the 2000 federal census. In no event should the total deviation between the largest and the smallest district exceed ten percent (10%). The City will attempt to achieve a deviation that is less than ten percent (10%) under the data released by the Census Bureau.

Redistricting Criteria

- The districts should be compact and composed of contiguous territory. Compactness may contain a functional, as well as a geographical dimension.
- Consideration may be given to the preservation of incumbent-constituency relations by recognition of the residence of incumbents and their history in representing certain areas.
- The plan should be narrowly tailored to avoid retrogression in the position of racial minorities and language minorities as defined in the Voting Rights Act with respect to their effective exercise of the electoral franchise.
- The plan should not fragment a geographically compact minority community or pack minority voters in the presence of polarized voting so as to create liability under section 2 of the Voting Rights Act, 42 U.S.C. §1973.

Public Hearing on Proposed Redistricting Plans

November 17, 2009



The City of
Seguin

2009 Initial Assessment of City Council Districts Following 2009 Annexations

Presented By: Greg Hudson

Hudson & O'Leary, L.L.P.

1010 Mopac Circle, Suite 201

Austin, Texas 78746

512-441-9941

fax: 512-441-1501

ghudson@holaw.net

November 3, 2009